

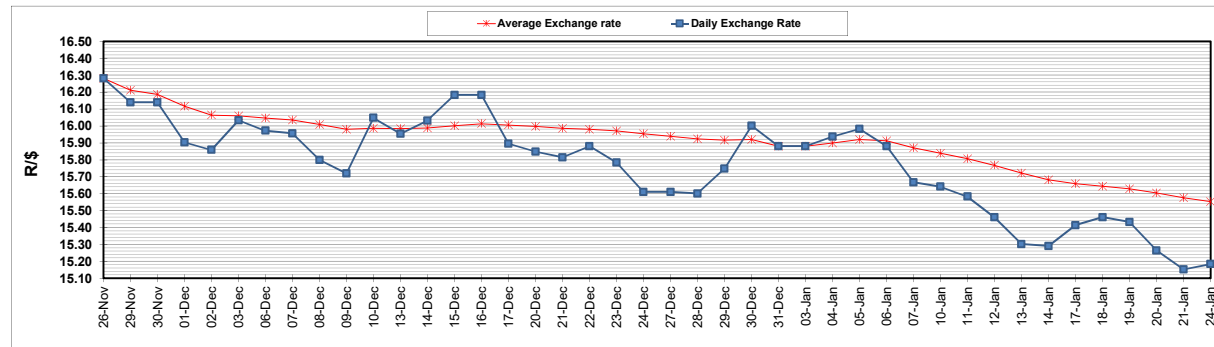
	PETROL 95 ULP	PETROL 93 ULP & LRP	DIESEL 0.05%	DIESEL 0.005%	ILL. PAR.
GAUTENG PUMP PRICE (SA c/l) AS FROM 05/01/2022	1,961.000	1,936.000	-	-	-
WHOLESALE PRICE (SA c/l) AS FROM 05/01/2022	-	-	1,724.680	1,728.080	1,096.688
SINGLE NATIONAL MAXIMUM RETAIL PRICE	-	-	-	-	1,394.000
BASIC FUEL PRICE - 24/01/2022 (SA c/l)	983.860	972.365	1,002.667	1,005.438	1,003.528
PRESS RELEASE CONTRIBUTION TO BFP 05/01/2022 - 24/01/2022 (SA c/l)	903.470	888.470	885.630	889.030	875.128
UNIT OVER/(UNDER) RECOVERY - 24/01/2022 (SA c/l)	(80.390)	(83.895)	(117.037)	(116.408)	(128.400)
AVERAGE BASIC FUEL PRICE 31/12/2021 - 24/01/2022	973.619	961.669	983.042	985.223	981.066
AVERAGE UNIT OVER/(UNDER) RECOVERY 31/12/2021 - 24/01/2022	(57.761)	(60.281)	(85.059)	(83.487)	(93.408)

### ANALYSIS MOVEMENT OF AVERAGE OVER/(UNDER) RECOVERY

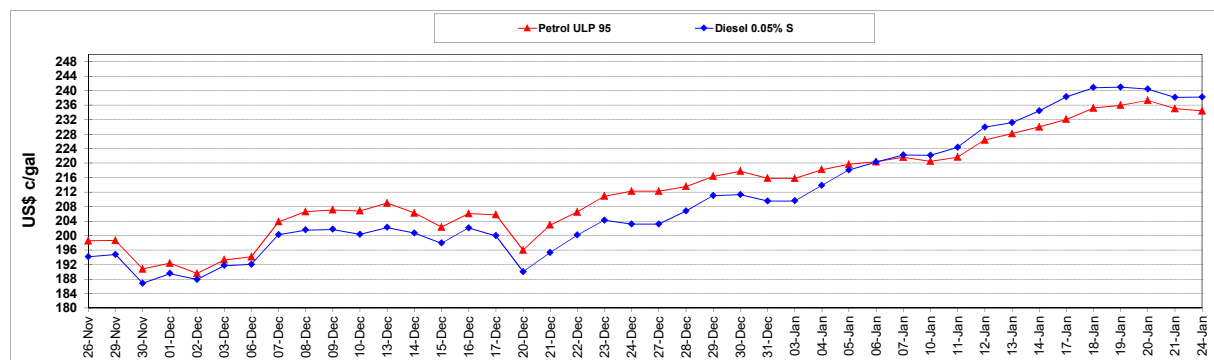
	PETROL 95	PETROL 93	DIESEL 0.05%	DIESEL 0.005%	ILL. PAR.
- MOVEMENT IN INTERNATIONAL PRODUCT PRICES	(80.685)	(82.923)	(108.204)	(106.684)	(116.508)
- MOVEMENT IN EXCHANGE RATE	22.924	22.642	23.145	23.197	23.099
AVERAGE UNIT OVER/(UNDER) RECOVERY 31/12/2021 - 24/01/2022	(57.761)	(60.281)	(85.059)	(83.487)	(93.408)

### R/\$ EXCHANGE RATE - (R/\$15.1835 - 24/01/2022)

#### EXCHANGE RATE USED IN BASIC FUEL PRICE



#### INTERNATIONAL PRODUCT PRICES OF BASKET USED IN BASIC FUEL PRICE



#### BASIC FUEL PRICE IN SA CENTS PER LITRE

